

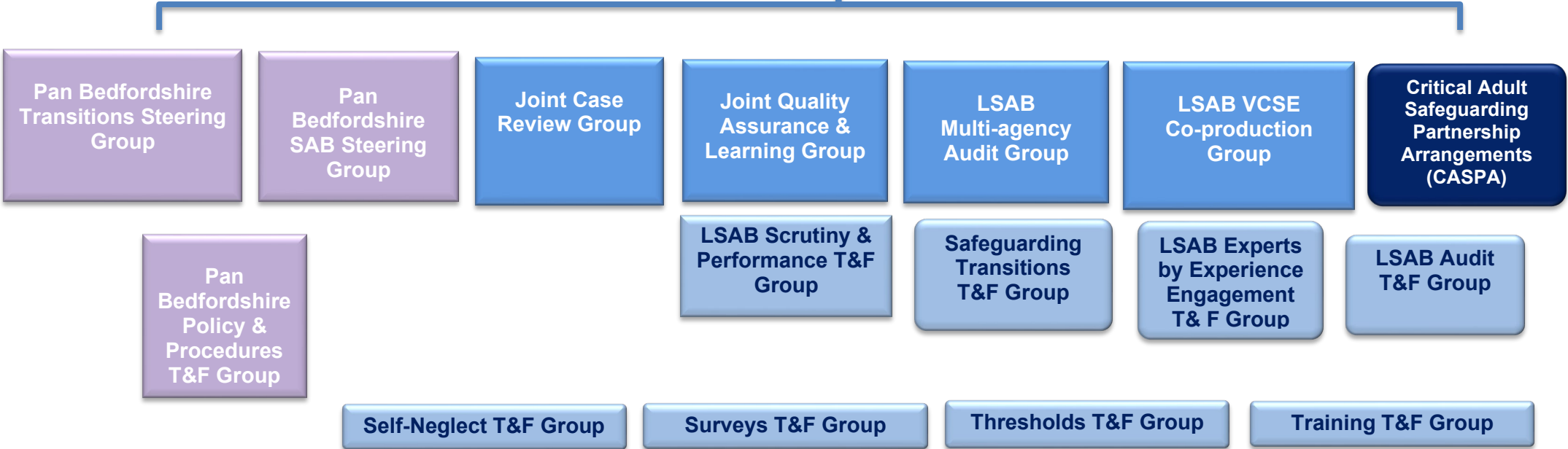
- Luton Community Safety Partnership
- Luton Domestic Abuse Programme Board
- Luton Drug & Alcohol Board
- Luton Health and Wellbeing Board
- Luton On Street Sexual Exploitation Group
- Luton Serious Harm Board

Statutory Partnership Chairs & Safeguarding Assurance meeting  
(LSAB Executive and LSCP MASA meeting)

Luton Safeguarding Adults Board  
Independent Chair

Luton Safeguarding Children Partnership  
Chaired by DSPs

The above groups link to LSAB priorities but not LSAB led



Denotes a group for Luton Safeguarding Adults Board only

Denotes a Joint Group with Luton Safeguarding Children Partnership

Denotes a Pan Bedfordshire Group for the two Safeguarding Adults Boards

Denotes a Luton Borough Council led operational multi-agency group.