



Safeguarding Newsletter

Information for partners and community across Bedfordshire Q2 2025/26

This newsletter is produced on behalf of [Bedfordshire's 3 Safeguarding Children Partnerships](#); Bedford Borough, Central Bedfordshire and Luton, enabling us to share safeguarding updates directly with you.

If this newsletter was forwarded to you, please sign up to our [mailing list](#).

Local Updates

Invitation: First Quarterly Child Safeguarding Conversation

We're pleased to invite you to the first in a new series of quarterly conversations designed for practitioners and operational managers across our Safeguarding Children Partnerships in Bedford Borough, Central Bedfordshire, and Luton. These sessions are a key part of our commitment to ensuring the voices of those working directly with children and families are heard and valued in shaping safeguarding practice and strategy.

Facilitated by Independent Scrutineers Jon Brown and Sally Rowe, this conversation will provide a space for open dialogue, shared learning, and reflection on current challenges, innovations, and emerging themes in safeguarding.

Why join us?

- Share your experiences and insights from frontline practice
- Help shape strategic safeguarding planning and policy
- Connect with colleagues across the partnership
- Contribute to a culture of openness and continuous improvement

- **Date:** 16th October
- **Time:** 1300-1415
- **Platform:** TEAMS

Please contact [Sophie Adams](#) to request your place.

We hope you'll join us for this important conversation. Your perspective is vital in helping us understand what's working, where the pressures lie, and how we can continue to improve outcomes for children and families.

National Headlines

The [Child Safeguarding Practice Review Panel](#) has published a [new report](#) exploring learning and improvement from serious child safeguarding incidents and the local child safeguarding practice review process in England. The Panel sets out priorities for change including actions for government, safeguarding partnerships and the Panel.

The **Department for Education** has released [data](#) on the number of serious incident notifications involving children made by local authorities in England between 2019 and 31 March 2025. Key findings include: 338 serious incident notifications were made between 1 April 2024 and 31 March 2025, down from 405 in 2023-24. 162 notifications were related to child deaths and 167 notifications were related to serious harm.

The NSPCC has published a [news story](#) highlighting issues facing local authority home education teams in England. Findings from a Freedom of Information request sent out to local authorities show: elective home education officers in local authorities are responsible for an average of 388 children each; the number of families home educating their children has more than doubled over the past five years; and two thirds of local authorities saw an increase in the number of staff to match this demand. The NSPCC is calling for the government to provide local authorities with the funding needed to safeguard and support home educated children, including the creation of a Children not in School Register.

Learning from Experience *including learning from Child Safeguarding Practice Reviews (CSPR's)*

Local Learning

Bedford Borough, Central Bedfordshire and Luton Safeguarding Children Partnerships work closely to share learning from safeguarding audits, assurance activity and Child Safeguarding Practice Reviews.

Recent themes for learning are highlighted below. We encourage you to review these with colleagues, and take action as appropriate to your organisation;

- Confidence to recognise and respond to Child Sexual Abuse. (Training available from [Safeguarding Bedfordshire](#) and [Centre of Expertise on CSA](#). Visit the [Pan Beds Procedures](#) -scroll to Chapter 3.7.)
- Emergency/ lockdown procedures ([DfE Guidance, July 2024](#) & [Martyn's Law, Sept 2025](#))
- Timely sharing of Safeguarding files when children transfer between Education settings ([KCSIE, p.173-174](#))
- Importance of Education as a safeguarding partner- timely information sharing with schools by all agencies.
- Capturing the [feelings/ wishes of children](#) (including siblings, where appropriate) in observations/ assessments.
- Use of [multi-agency chronologies](#).
- Use of [Multi-Agency Joint Supervision \(Central Beds only\)](#)
- Awareness of '[Stop & Review](#)' meetings, '[Was Not Brought](#)' and [Escalation](#) Procedures.

Reminder: New link for [Bedford Borough, Central Bedfordshire and Luton Safeguarding Children Partnerships Procedures Manual](#). [View recent updates \(May/ June 2025\)](#) and [register for updates here](#).

National Learning: NSPCC Repository - Learning from Case Reviews

In Sept, the NSPCC added six case reviews to their [repository](#). Themes included child criminal exploitation, domestic abuse, filicide, and child neglect.

Neglect

Pan Bedfordshire Neglect Campaign- Update

Our Pan Bedfordshire Neglect awareness campaign; 'Stop, Think Neglect' continues, and **we are pleased to share the wonderful logo created by Lissie**, a pupil at a Bedfordshire school.

The Neglect Campaign Group liked how Lissie's design focused on coming together to support children and families and how care was at the centre of our work.

On 4th July we ran the first of our first 'Listen & Learn' neglect themed webinar. This session gave an overview of Neglect in Bedfordshire, and the local tools/ resources available to support practitioners working with children, young people and their families. **Thank you to Emma M and Micheala M for an insightful session.**

"It's good to know and understand the tools available. I especially like the fact of using them with parents to help identify things with them rather than them being told what professions think they are doing wrong... really appreciate the information from today."

Keep up to date with the latest news from our campaign [here](#).



FREE: Listen & Learn Session

We will be running the 'Listen & Learn: Neglect in Bedfordshire' session again on 14th October (1330-1500) on TEAMS. [Click here](#) for booking details.





Interested in hosting a free 'Listen Up, Speak Up' session? Click the flyer for more details and contact the [NSPCC East Campaigns](#) if you are interested in organising a workshop in your local area.

COMING SOON

Bedford Borough, Central Bedfordshire and Luton Safeguarding Children Partnerships are working on a range of Neglect themed webinars covering themes such as Adolescent Neglect, Medical Neglect, Hoarding and Educational Neglect. Information will be shared via [Safeguarding Bedfordshire training](#) mailing list once available. *(To check if you are signed up to the mailing list, log in to your Safeguarding Bedfordshire account, check your profile and opt in to marketing.)*

Reminder: Neglect Practitioner Resources

We would like to highlight **resources available to support practitioners** across Bedfordshire in identifying and responding to concerns of neglect- some examples below. More information is available via our [website](#).

'Day in my Life' resources and [practitioner briefing](#) and [guidance](#).

- [Unborn Baby](#)
- [Baby](#)
- [Pre-Schooler](#)
- [Primary/ Lower/ Middle School Age](#)
- [Teenager](#)
- [Children with Disabilities](#) ***NEW***
- [Young Carers](#) ***NEW***

The **Graded Care Profile 2** (GCP2) helps practitioners measure the quality of care provided by a parent or carer in meeting their child's needs, particularly where there are concerns about neglect. Using the GCP2 assessment tool, practitioners score aspects of family life on a scale of one to five. This assessment helps them identify areas where the level of care children receive could be significantly improved. Practitioners need to be licensed to use the GCP2; training is available through each local authority for those in a suitable role. For more information;

- Bedford Borough contact: EHTraining@bedford.gov.uk (free)
- Central Bedfordshire contact: LearningCentral@centralbedfordshire.gov.uk (free)
- Luton contact: Learning&Development@luton.gov.uk (costs apply for late cancellation/ non-attendance)

Neglect Screening Tool: The Neglect Screening tool is a simple assessment to support those less experienced/ confident in spotting signs of neglect. The tool takes you through some questions and offers advice on next steps and support. Read the [Practitioner Briefing](#) and download the [Screening Tool](#).

Need to refresh/ update your knowledge of Neglect? View details of our '[Understanding Neglect](#)' course. The [NSPCC website](#) offers a great overview of the topic.

Child Sexual Abuse (CSA)

REMINDER: Child Sexual Abuse Training (funded places available)

Bedford Borough, Central Bedfordshire and Luton Safeguarding Children Partnerships are working with the NSPCC to spotlight our local response to Child Sexual Abuse (CSA). As part of this work, **we have launched two new training events**. Places are funded by the Safeguarding Partnerships but late cancellation/ non-attendance charges apply. All



sessions take place at Priory House, Shefford, SG17 5TQ (0930-1630). *Please note: refreshments/ lunch is not included. Onsite café available. Free parking.*

- [Developing an Understanding of Child Sexual Abuse](#) (2 days). The training is delivered by local practitioners who have completed a 3 day accreditation with the NSPCC.
- [Technology Assisted Child Sexual Abuse](#) in partnership with Marie Collins Foundation.

Learn: The [Centre of Expertise on Child Sexual Abuse](#) offer a free [CSA awareness eLearning](#) and [free webinars](#). They have also published '[What you need to know about Child Sexual Abuse](#)' (March 2025) and recently updated their '[Communicating with Children](#)' guide. Our Pan Beds Guidance can be found [here](#).

NSPCC Blog: Why Language Matters

Sibling Sexual Abuse: Children's sexual development and behaviour can be a sensitive subject, and professionals often lack confidence when talking about it. In cases of sexual behaviour between siblings, the subject becomes particularly complex and nuanced, and it can be hard for professionals to find the right words. The NSPCC have produced a '[Why Language Matters](#)' briefing to support practice.

Sextortion: When harm to a child involves numerous forms of abuse, it can be difficult to understand and manage what's happening and why, let alone find the right words to describe it. This is the case with a type of abuse – often referred to as 'sextortion' – which spans sexual abuse and exploitation, financial exploitation, online abuse, fraud and blackmail. In [this blog](#), the NSPCC explore why using the term 'sextortion' may obscure professional understanding of this issue and outline how rethinking our language choices can help us to engage with and support children and young people affected by this form of abuse.

Coming Soon: Mandatory Reporting of CSA (NSPCC webinars)

NSPCC Learning is offering free [Mandatory reporting webinars](#) on the proposed statutory duty to report child sexual abuse in England. As part of the Crime and Policing Bill, individuals undertaking key roles with responsibility for children and young people will be required to report sexual abuse when they are made aware of it.

Healthy Relationships

Talk Relationships (NSPCC)

NSPCC Learning has updated the [Talk Relationships](#) service, a free resource supporting secondary schools to confidently deliver inclusive sex and relationships education. Talk Relationships has been updated based on feedback from teachers and young people. New additions include: fully editable lesson plans; a new lesson plan on preventing gender-based violence; the Youth Voice Matters toolkit, to help engage young people in a whole-school approach.

iCaSH: Free Sexual Health Training

The iCaSH Outreach Team provide [free sexual health training sessions](#) for people working in **Bedfordshire, Cambridgeshire, Milton Keynes and Norfolk** only. These sessions are recommended for a wide range of practitioners including education workers, youth workers, health and social care and voluntary sector.

Free webinar: Young People & Violence Prevention- one year on from the riots

ConnectFutures and [Dartington Service Design Lab](#) are teaming up for our first joint webinar, exploring the challenges and opportunities of youth violence prevention following the 2024 summer riots. The session will spotlight **trauma-informed approaches** and how practitioners are supporting young people and communities amidst ongoing tensions. [Booking link](#).

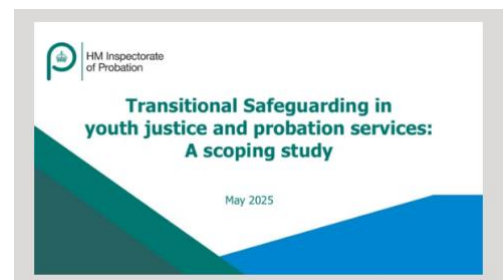


Child Exploitation (Criminal & Sexual) & Contextual Safeguarding

Youth Justice

The Nuffield Foundation and University of Bedfordshire have published [new research](#) examining racial disparities in diversion from the youth justice system. The research looked at the decisions made when a child came to police attention and whether they were diverted through informal measures such as community resolution and avoided criminalisation, or they received a formal charge or caution. Based on a literature review and a survey of Youth Justice Teams in England and Wales, findings show: ethnic disparities in outcomes increases with the intensity of the youth justice interventions; the offences committed by minoritised children are treated more severely, resulting in comparatively more intensive diversionary outcomes; and Black and Mixed Heritage children are the most likely to be over-represented at all stages of the youth justice system. Recommendations call for the police and youth justice services to review recording and reporting practice regarding disproportionality and diversion.

HM Inspectorate of Probation (HMI Probation) has published a bulletin exploring how [transitional safeguarding is understood and applied within youth justice and probation services](#) in England. Key recommendations include: transitional safeguarding should be embedded within existing transition protocols and inspection frameworks; relational and developmentally-informed practice should be foregrounded in policy, training and inspection; policies, protocols and training should help staff understand the safeguarding risks for young people as well as the risks they may pose to others; and youth justice and probation services should forge good local connections with education and employment routes.



Click the image above to watch a briefing video (8mins)

Look Closer: Free Exploitation webinars from The Children's Society

We are pleased to share details of the Children's Society's upcoming #LookCloser [Programme of Learning \(Oct - Dec\)](#). #LookCloser is a partnership campaign between The Children's Society, the National County Lines Co-ordination Centre and the British Transport Police aiming to raise awareness of child exploitation and abuse and to encourage the public and businesses to better identify and report concerns. The campaign also seeks to challenge assumptions and victim stereotypes, highlighting that child exploitation can happen anywhere, and any young person can be a victim. You can book on to the sessions for free, by clicking on the session titles within this flyer. Please share this flyer with your networks, or any colleagues you think you benefit from these sessions.

Recognising Cuckooing- free webinar for Central Bedfordshire

Central Bedfordshire Community Safety Partnership would like to invite you and your colleagues to join a free webinar on cuckooing and exploitation. These sessions will explore the topic of cuckooing and criminal exploitation of vulnerable individuals, signs to look for to identify cuckooing, how we respond to these issues in Central Bedfordshire and how we can all work together to support our community.

- **Audience:** Practitioners based in, or whose role covers, Central Bedfordshire.
- **Date:** Tues 2nd December – 10:30-12:30pm
- **Booking:** Contact community.safety@centralbedfordshire.gov.uk with your preferred date.

Free training: Pan Beds Multi-Agency Information Submission Form

Have you seen or heard something suspicious but not sure about what to do with the information?
Have you seen something which doesn't feel right but you are not sure what the issue is?
Has a resident given you information about possible criminal activity?



Do you believe an adult or child is showing signs that they could be being exploited?

We would like to invite you to attend a **free** virtual training session about the 'Multi-Agency Information Submission Form'. **Booking info:** [Event flyer](#). Sessions take place on TEAMS and cover;

- What is the Multi-Agency Information Submission Form' (MA Form) and why was it developed?
- When and how do I use the MA Form?
- What makes a good submission?
- What happens when I submit an MA Form?
- What's the difference between the MA Form and Social Care referral and/ or Crime Report?

Audience: The session is available to Bedfordshire based practitioners/ volunteers who work with children, young people and/ or vulnerable adults.

NWG: Free Practitioner Forums

The [National Working Group \(NWG\)](#) hosts free quarterly sector specific exploitation focused forums. They also offer a free 'Experts by Experience' training' on 7th Oct @ 10am.

- Exploitation & Transitions into Adulthood Forum (7th Oct @ 1.30pm)
- Safeguarding in Sport Forum (8th Oct @ 10am)
- Police & Justice Forum (14th Oct @ 10am)
- Child Exploitation in Faith Forum (27th Nov @ 11am)
- Diversity Forum (11th Dec @ 11am)

Health & Wellbeing

Men's Mental Health Week: CAMHS Podcast

Men's Mental Health Week took place in June but we wanted to reshare this CAMHSTalk podcast. In this episode, co-hosts Marianne and Jay explore what men's mental health looks like for male service users and clinicians. They are joined by Jawad, Zawad, Tyrone and Shibs to discuss the barriers to men's mental health and how they have been individually working to break these down in their lives. They are all open and candid about their own experiences and share insights into their role models, as well as working in the field of mental health as a man.



Sexuality & Gender Identity

The NSPCC has published a [news story](#) on 2,400 Childline counselling sessions regarding children's issues or concerns about sexuality, gender and identity issues in 2024/25. The story discusses young people's concerns including discrimination, coming out and worries about prejudice or bullying. The story also signposts to help and resources for children, parents and carers.

Pushing Forward: Testing Learning on Adulthood in Child Safeguarding Practice



Listen Up has [published a report](#) on Adulthood; a form of bias where children from Black, Asian and minoritised ethnic communities are perceived as being more 'streetwise', more 'grown up' and less vulnerable than other children. The review finds growing awareness of adulthood but highlights some concerns about the depth of understanding and commitment to addressing the issue, including resistance to recognising adulthood as a form of racism. The report includes recommendations and examples of promising practice.



ADHD

ADHD (attention deficit hyperactivity disorder) is a condition where the brain works differently to most people. Children and young people with ADHD may have trouble with things like concentrating and sitting still. Learning more about ADHD will help when working with children, young people and/ or adults with this diagnosis. **Find out more:** [Children & Young People](#) and [Adults](#) (NHS).

Safeguarding Babies & Unborn

Pre-Birth Assessment Guidance

The [Pan Bedfordshire Pre-Birth Planning and Assessment Guidance](#) enables practitioners to work together with families to safeguard unborn babies where risk is identified. It sets out how to respond to concerns for unborn babies, with an emphasis on clear and regular communication between practitioners working with the pregnant parent and their family. It is important that **all agencies involved in pre and post birth assessment and support** fully consider the significant role of [fathers, partners](#), wider family members or other significant adults in the care of the baby even if the parents are not living together and where possible involve them in any assessment. Information should be gathered about partners who are not the biological father at the earliest opportunity to ensure any [risk factors](#) can be identified.

Listen: [Effectively Engaging Fathers in Safeguarding Practice](#) Future Men has released a podcast episode looking at how to engage fathers in safeguarding practice and involve them in support for children and young people.

ICON Week 2025- Help prevent abusive head trauma in babies

Bedfordshire and Luton Children's Community Health Services NHS Trust is supporting the 2025 [ICON Campaign](#). This year's theme is: **Helping Parents Stay Calm When Babies Cry**. They will be sharing daily messages (22nd-26th Sept) on social media pages to link with this theme. The ICON toolkit can be found [here](#).

Bedfordshire and Luton 0-19 service (Health visitors) will be visiting different venues across Bedford and Luton during ICON week. It's an opportunity for families to talk about how it feels to cope with a crying baby. Our staff will discuss strategies to use and signpost to relevant resources and where to get further help.

Monday 22nd September

- 10:00-12:00, Baby Days Flitwick Children's Centre, Malham close MK451PU
- 09.30-11.30, Daisy Hill Family Hub, Hillgrounds Road, Bedford, MK42 8QH.

Tuesday 23rd September

- 09.30-11.30, Queens Park Family Hub, Marlborough Road, Bedford, MK40 4LE
- 13.30-15.30 Hockwell Ring Community Centre, Mayne Avenue, Luton LU4 9LB
- 13.30- 14.45 Buzzard Children's Centre, East Street, Leighton Buzzard, LU7 1EW

Wednesday 24th September

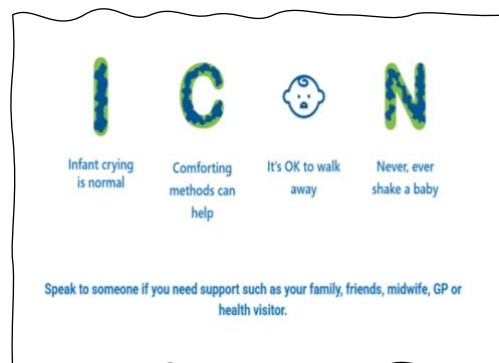
- 1.30-2.30, Luton Central library, St George's Square, Luton, LU1 2NG

Thursday 25th September

- 09.30-11.30, St Francis Church, Carteret Road, Luton, LU2 9JZ
- 13.00-14.30, Downside CC, Oakwood Road, Dunstable, LU5 4AS

Friday 26th September

- 09.30-11.00 Biggleswade Youth Centre, 137 Meade End, Biggleswade, SG18 8JU
- 09.30- 11.30 Pine Cones Family Hub, Slade Walk, Bedford, MK41 7SA



The ICON campaign aims to help prevent abusive head trauma - it is an evidenced-based programme designed to help parents and carers understand the normal crying pattern of young infants and help them develop successful coping mechanisms to manage the stresses which can be caused by normal infant crying. The ICON programme delivers four simple messages before the birth and in the first few months of a baby's life. There are resources available on the website along with support pages for both professionals [practitioners](#) and [parents/ carers](#).

Early Years

Updated: Early Years Foundation Stage 2025

The Department for Education's (DfE) latest version of the [Early Years Foundation Stage \(EYFS\)](#) statutory framework is now in effect. The NSPCC [CASPAR briefing](#) summarises the safeguarding and welfare requirements in the framework for childminders and group and school-based providers. This includes information on safer recruitment, supporting and understanding children's behaviour, promoting good health, and maintaining records, policies and procedures.

EYFS Changes & Food Safety Webinar

Safeguarding Network have made their EYFS Changes [webinar recording](#) available.

Childminders

[Safeguarding Bedfordshire](#) are currently running Childminder specific [Designated Safeguarding Lead](#) training (£37.50) to support Childminders in meeting the new EYFS requirements. This training has been popular and more dates will be added based on demand. Prospective Childminders may find this [pre-reg briefing](#) guidance (Ofsted) helpful to understand the process to becoming a childminder.

Prevent in Education: Training for Early Years Foundation Stage staff

This training package has been designed by DfE for staff within the early years foundation stage to understand their responsibilities and the importance of the Prevent duty. [Click here](#) for dates.

Education

Updated: Keeping Children Safe in Education 2025

The updated [Keeping Children Safe in Education](#) guidance was published on 1 September. Our Local Authority Safeguarding in Education teams have revised their Child Protection template policy; these have been circulated to schools. [Safeguarding in Schools](#) have produced a Child Protection Policy '[cheat sheet](#)' to support you in reviewing your safeguarding policy. An NSPCC briefing on the changes can be found [here](#).

As a reminder, Safeguarding Bedfordshire have the following recommendation for [DSL's training pathway](#).

Free Safeguarding & Inspection webinar

Safeguarding remains at the heart of the inspection process. Join Safeguarding Network on September 29th at 4pm for a free webinar: [Strengthening your Safeguarding Culture and Practice under the New Inspection Framework](#). This session will take you through the latest updates in the new Ofsted guidance, discuss the types of evidence you can present, and share practical strategies for ensuring the safety, welfare, and wellbeing of children and young people in education.



Safeguarding in Multi-Academy Trusts (NSPCC Podcast)

NSPCC Learning has published a podcast episode discussing safeguarding in multi-academy trusts, featuring experts from the NSPCC and Lift Schools, a multi-academy trust (MAT). The episode covers: the safeguarding roles and responsibilities of a multi-academy trust; the importance of Designated Safeguarding Leads sharing their experiences to support and learn from each other; harnessing collective knowledge across teams; and the benefits and challenges of Lift Schools' regional approach.

Listen to the podcast: [Podcast: Safeguarding in a multi-academy trust](#)

Listen on YouTube: [Safeguarding in a multi-academy trust](#)

How Martyn's Law will affect Education settings

The [Terrorism \(Protection of Premises\) Act 2025](#), also known as Martyn's Law became law 3 April 2025. The Government has published guidance for education settings, to provide information on how education settings including early years settings will be affected when this law is implemented. [How Martyn's Law will affect education settings - GOV.UK](#).

Community

Free from Carers in Bedfordshire: Online Course for Mental Health Carers

Caring can be extremely difficult; it can be particularly challenging when your situation changes suddenly. When you are caring for someone with a Serious Mental Illness this can happen at any moment. This free eLearning course helps Carers prepare themselves to be able to handle whatever comes. This course is designed to give Carers the information they need to help them care confidently for as long as they need to, no matter what happens. [Find out more](#). Carers in Bedfordshire have a number of [free courses](#) for Carers and Practitioners. [Click here](#) to sign up to the Carers in Bedfordshire newsletter.

Community Voluntary Service (CVS)

CVS is a voluntary and community sector support organisation, offering a range of services, enabling local organisations and communities to make a difference. They host a number of free webinars, training and drop in sessions. [Click here](#) for a list of events currently planned for Autumn 2025.

Domestic Abuse

Domestic Abuse in Pregnancy

NSPCC Learning has published a [podcast episode](#) looking at domestic abuse in pregnancy and improving support for families affected. The podcast features a discussion with experts from the NSPCC Helpline and the For Baby's Sake Trust. The discussion covered the difficulties with working out how many babies are impacted by domestic abuse; identifying concerns, providing support; taking a trauma-informed approach; and blockers to support.

Learn: For local DA support and information, visit [Bedfordshire Domestic Abuse Partnership](#) (BDAP). Safeguarding Bedfordshire offer a range of free [Domestic Abuse Training](#).

Free online drop in sessions 'Child to Parent Violence and Abuse'

CAPA First Response host FREE online drop in for parents/carers experiencing Child to Parent Violence and Abuse (CAPVA). There virtual 'lunchtime' drop in session are a safe space for parents/caregivers to connect, share



experiences, and learn strategies from experienced practitioners for managing challenging behaviours and understanding the potential cause of this harmful and aggressive behaviour, with a live Q&A session. Sessions occur weekly on a Wednesday on Zoom. View [upcoming dates](#).

Online Safety

NSPCC: Online Safety Expert Insight videos

Being online is a huge part of children's lives. Social media, online gaming, instant messaging platforms and image-sharing services enable children to connect with friends, explore interests, and discover new communities. This series of [expert insight films](#) helps those working and volunteering with children and young people to explore what online safety means, recognise the risks children face and understand how to support children's safety online.

Artificial Intelligence

Gen AI (generative artificial intelligence) use is increasing, but is your safeguarding team aware of the latest online harms children and young people may be exposed to from apps and websites? Are you aware of AI girlfriends, nudifying apps and more? [London Grid for Learning \(LGfL\)](#) have created two new video sessions for practitioners and parents and also collated the latest resources from other organisations for you to use and share:

- [Gen AI: The Harms Landscape](#): Video for parents and those in safeguarding roles (11mins)
- [Gen AI: What Schools Need to Know](#): This clip is aimed at Education colleagues, and follows on from the clip above (9mins)
- [LGfL AI resources portal](#)

[Internet Matters](#) also have information on Using Artificial Intelligence safely.

Harmful Content Trends

The SouthWest Grid for Learning (SWGfL) published its [Harmful Content Report 2024](#). It reveals a 20.5% year-on-year increase in harmful content cases, with 6,222 reports handled over the past 12 months. In 86% of cases, harmful content was successfully removed, often within hours, and nearly half were resolved within 24 hours. Notably, 24% reports involved children under 18, with a significant number concerning those under 12. The report highlights that 37% of harmful content was hosted on smaller/ less regulated platforms, pointing to growing risk in these spaces.

Safeguarding Bedfordshire: Multi-Agency training update

[Safeguarding Bedfordshire](#) is the multi-agency training provider for the Safeguarding Children Partnerships in Bedford Borough, Central Bedfordshire and Luton. Training is aimed at those working with children/ young people across Bedfordshire. Our multi-agency approach ensures a shared understanding of the priorities held by each of the Partnerships and promotes partnership working in order to safeguard children and young people, with the ambition that they will lead safe, happy and healthy lives, with opportunities to learn, develop and fulfil their potential.

[View our 2025/26 training programme](#).

Upcoming courses;

- [Working Together to Safeguard Children](#)
- [*NEW* Safeguarding 'Train the Trainer'](#)
- [Developing an Understanding of Child Sexual Abuse](#)
- [Technology Assisted Child Sexual Abuse](#)

Free eLearning: The 3 Safeguarding Partnerships jointly fund over [20 eLearning modules](#) making them available for free to those who work/ volunteer with children, young people and families in Bedfordshire.



Booking: visit www.safeguardingbedfordshiretraining.co.uk and click 'Login/ Register'. Once logged in, click the safeguarding Bedfordshire icon for free eLearning, or 'Events' (top of page) then 'available events' to view face to face training courses. [Costs, Terms & Conditions apply](#). Need help? Contact safeguarding.bedfordshire@centralbedfordshire.gov.uk

Q1 Training Summary

In Q1 (April-June 2025), Safeguarding Bedfordshire delivered 14 learning events (9 CPD courses/ 5 free awareness raising webinars) attended by 333 practitioners. Our eLearning was completed by 2071 practitioners.

Want to win free training? Each quarter, we draw one winner from all fully completed training evaluations. The winner receives a £75 credit to use against Safeguarding Bedfordshire training.

WINNER!

CONGRATULATIONS to Jenny who won a free training place in our Q1 evaluations 'raffle'.

What are practitioners saying about our training?

Designated Safeguarding Leads: Roles & Responsibilities "As a small charity I am now **equipped to deal with safeguarding referrals/ emergency** as we take children on holiday clubs in different locations. We do have two DSL however when busy at club I now can take the initiative to know what to do before consulting." **Engagement Team, Voluntary Sector, Bedfordshire**

Designated Safeguarding Leads: Update "Refreshing and updating knowledge, especially being **challenged with scenarios based on issues that have emerged since previous training**. Top Tips for where to find guidelines, rather than the need to remember everything! Reminder of the need to be **gently persistent with offers of support to harder to reach families**. Key Learning to pass on to colleagues: 1. A Day in my Life (for effective voice of the child) 2. Intelligence sharing - will look at the training and guidelines again, together with deputy DSL." **Head Teacher, Education, Bedford Borough**

Designated Safeguarding Leads: Childminders "This was a very good refresher training for me that **highlighted the changes which are up and coming**. I will now confidently access the websites and pathways to get the information I need if needed at any time." **Childminder, Central Bedfordshire**

Working Together to Safeguard Children "Absolute **clarity in explanations** about the structures, processes, difference between law and guidance. Local statistics and local processes. The approach of 'radical candour' about Key Professional Barriers. I will **take all of this into my practice** as DSL and **ensure that the DDSL also updates** their training." **Head Teacher, Education, Bedford Borough**

Understanding Neglect "It helped me **understand the different aspects of neglect**, how it affects the entire family and how to **support the whole family**." **GP, Central Bedfordshire**

Developing an Understanding of Child Sexual Abuse (DUCSA) "Having the **wider experience of people on the training**, I felt was **very effective** and led to **good discussions**. I would recommend to DSL's; I felt that for more junior staff, they would feel that some of the information was hard hitting. It was useful seeing the example and unpicking it across the day. The **trainers were great at engaging** and all supported the content well." **Manager, Early Years, Central Bedfordshire**

Technology Assisted Child Sexual Abuse (TACSA) "Hearing the lived experiences and what we can do to support them in their words. I will **not be afraid to ask some questions out right**. I would be **interested in learning more about misogyny** and how we can teach students healthy / unhealthy thoughts around this." **Pastoral Team, Education, Central Bedfordshire**

Working within Child protection: Section 47 "The pod-cast style interview was **very informative with the lead professionals from the different agencies**. The case study was **interactive and engaging** to do with other professionals. I really liked the multi-agency element of the training, ensuring that everyone **from different agencies can interact and learn together**. I have a **greater understanding** of the updated Working Together document and am **more aware of the strategy meetings/ discussions and how the decisions are made**. I will make it a point to **ensure I keep close contact for strategy meeting minutes after attending** in future. I am **able to advise and inform junior colleagues** of the process in order to be able to support them in practice." **CCS**

Multi-Agency Information Submission Form "I wasn't really aware of the form at all, other than what colleagues had told me, so this will be **really useful** in my new role." **Voluntary Sector, Bedfordshire**



Are you a Designated Safeguarding Lead in Bedfordshire?

As a reminder, Designated Safeguarding Leads, and Deputies, working with children and young people in Bedfordshire should attend Working Together to Safeguard Children, along with their DSL role/ sector specific training. [View the DSL training pathway](#). We are responding to high demand, so if your preferred date is not available, please **join the waitlist** and we will be in touch as soon as new dates agreed.

- [Designated Safeguarding Leads- Roles & Responsibilities](#)
- [Designated Safeguarding Leads- Update](#)

Area Specific information and updates

BEDFORD BOROUGH SAFEGUARDING CHILDREN PARTNERSHIP UPDATE



Bedford Borough Safeguarding Children Partnership (BBSCP) [Multi-Agency Safeguarding Arrangements \(MASA\)](#) and [Annual Report](#).

Ofsted Inspection: Bedford Borough Children's Services

Ofsted undertook an inspection of Bedford local authority children's services Inspection between 14th to 18th July 2025 and their report was [published](#) on the 27th August 2025. The inspectors observed the breadth of their work across Bedford Borough Children's Services, seeing examples of strong relationships with children, dedicated practitioners who are well supported by their managers, and a clear ambition to improve outcomes for children. The outcome of the Inspection was that the service Requires improvement to be good. The Bedford Borough Children's Services and Bedford Borough Safeguarding Partnership will work together to address the areas identified for improvement. Here are some examples from the report of positive and good practice.

- There is an extensive and diverse range of services provided through the Bedford Early Help offer which support families to meet the needs of their children. Early Help assessments and reviews explore worries and concerns with families and address what is needed to improve their family's situations.
- The multi-agency child exploitation arrangements provide strategic oversight and a coordinated, strong response to children at risk of exploitation and risk outside the home. Knowledgeable and skilled workers know their children well. Workers' persistence and determination to engage children is effective, and children are making progress and risk is reducing. For children not supported by this team, social workers are not using all available tools and insight to inform their understanding of these vulnerabilities and risks to ensure these inform plans.
- The participation offer for children and young people is a strength in Bedford. It offers activities to a wide variety of children with different circumstances and needs. Children and young people are engaged and contribute to key developments and wider national thinking. Young people have been involved in creating a variety of resources to support others, and they have high aspirations for what they wish to do in the future.

Children & Adults Services trial use of 'Magic Notes' in Autumn

Bedford Borough Council Adults' and Children's Social Care have approved a pilot of Magic Notes, an innovative AI tool designed to help social care practitioners in Children's and Adults' Services. Magic Notes records and transcribes notes during meetings with service users, fills out templates, and even generates letters. By saving time on admin, it will enable their social care teams to spend more quality time with service users and less on paperwork - leading to improved outcomes for residents. The pilot will kick off this autumn, involving teams from both Children's and Adults' Services.

Family Hubs: Best Start for Bedford



[Family Hubs – Best Start Bedford Borough](#) is a one-stop-shop for parents and carers to find information, ideas and support for your family, no matter what the age of your children. If you are looking for something to do, help for your family, or just an answer to a question we have information to support learning, health, development, emotional wellbeing and much more. Please see the [Family Hubs September Newsletter](#) or click the image below.



Festive Fundraising for Charity

Christmas is on its way we are encouraging everyone to sign up to a festive fundraising campaign for [CHUMS](#) (a mental health charity) who support a number of mental health and emotional wellbeing services for children, young people and families across Bedfordshire and Luton. CHUMS wants local people to hold tea breaks, coffee mornings and afternoon teas to help it raise funds. For more inform click [here](#).

CENTRAL BEDFORDSHIRE SAFEGUARDING CHILDREN PARTNERSHIP UPDATE



Central Bedfordshire Safeguarding Children Partnership (CBSCP) [Multi-Agency Safeguarding Arrangements \(MASA\)](#), [Structure](#) and [Annual Report](#).

REMINDER: Central Bedfordshire launch new multi-agency joint supervision

Multi-Agency Joint Supervision (Central Bedfordshire cases only)

The relationship between core agencies in safeguarding vulnerable children is crucial in identifying the most effective support for children, young people and families and which promotes best practice in delivering interventions that bring about lasting change.

Key to this is understanding each other's roles, perspectives and having time to reflect on the emotional impact of this work, both on individuals as well as the professional network.

Multi-Agency Joint Supervision is a forum for exploring complex or challenging situations or addressing circumstances where there is drift, to promote an understanding of what may be happening for a child, ensuring we take a trauma informed view, increasing awareness of different perspectives, and promote system wide learning. [Read more](#). **Note:** This information is for Central Bedfordshire cases only.



LUTON SAFEGUARDING CHILDREN PARTNERSHIP UPDATE



Luton Safeguarding Children Partnership (LSCP) [Multi-Agency Safeguarding Arrangements \(MASA\)](#) and [Annual Report](#).

END



Do you have any safeguarding related news you'd like to share with our multi-agency audience across Bedfordshire? Please [contact us](#) with details for consideration in future newsletters or with any feedback on the newsletter.

